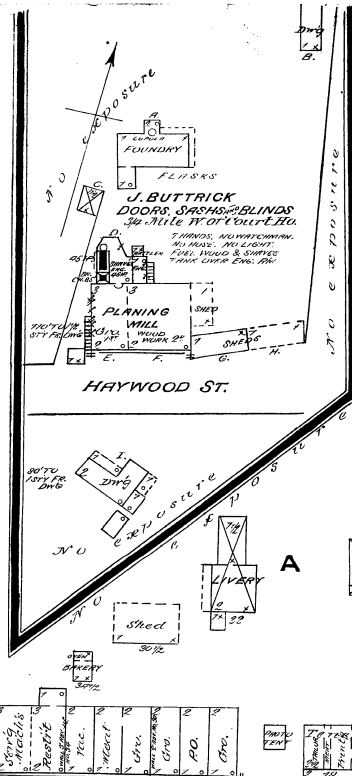


NOTICE—The SANBORN MAP & PUBLISHING CO. (Limited) will loan, to parties purchasing one copy of this map, a Duplicate, with the mutual understanding and agreement that it is to be used exclusively by their General or Local Agent, and with the further agreement that, if not to use one of the two copies will be returned to said Company.



KEY

—	IRON RAIL ROAD
—	STEEL RAIL ROAD
—	TRAMWAY
—	STABLE
—	WINDOW IN IT STUDY
—	FRAME PARTITION
—	SHED OR IRON DOOR
—	BRICK
—	WOOD
—	CONCRETE
—	ASBESTOS
—	ROOFING
—	PAVING
—	WATER
—	SEWER
—	TELEPHONE
—	ELECTRIC
—	RAILROAD
—	STREET
—	ALLEY
—	WALKWAY
—	DRIVEWAY
—	PO
—	CHURCH
—	SCHOOL
—	HOSPITAL
—	OFFICE
—	STORE
—	WAREHOUSE
—	FACTORY
—	STATION
—	TRAMWAY
—	RAILROAD
—	STREET
—	ALLEY
—	WALKWAY
—	DRIVEWAY
—	PO
—	CHURCH
—	SCHOOL
—	HOSPITAL
—	OFFICE
—	STORE
—	WAREHOUSE
—	FACTORY
—	STATION



NOTE
WATER FACILITIES, CONSIST OF 14 RESERVOIR 4000' AFT. OF COURT SQUARE, AT AN ELEVATION OF 700' ABOVE COURT SQ., CAPAC 300000 GALS. FEED BY SPRINGS. SIZE OF TOWN FROM RESERVOIR TO COURT SQ. 10 1/2 MILES IN ALL.

NOTE
Numbers 1001 & over are arbitrary others are used by the S.B. Co.

